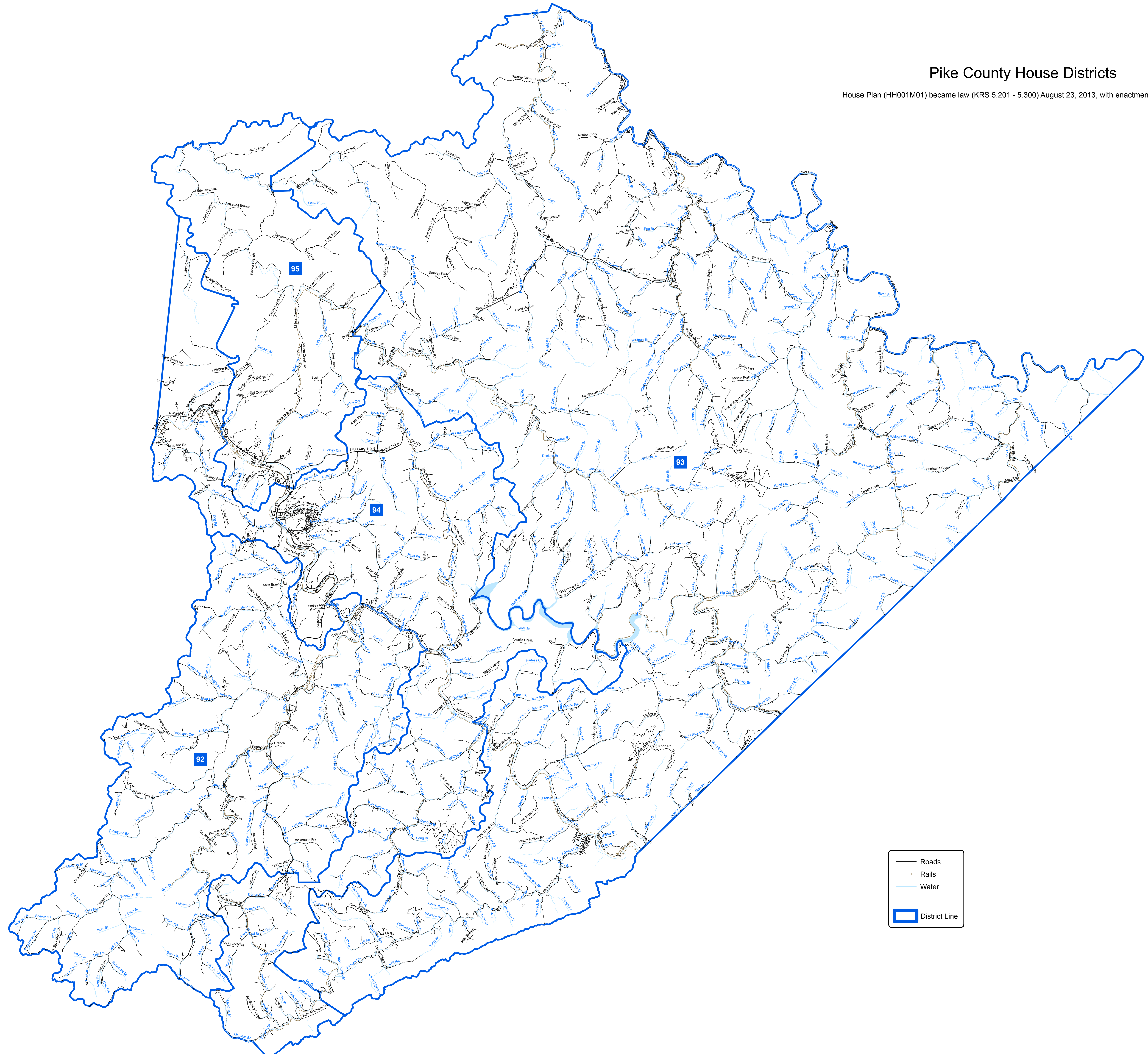


Pike County House Districts

House Plan (HH001M01) became law (KRS 5.201 - 5.300) August 23, 2013, with enactment of House Bill 1.



— Roads
— Rails
— Water
□ District Line



Map by: Kentucky Legislative Research Commission
Geographic Information Systems Office
Room 26, Capitol Annex
Franklin, Kentucky 40501
502-656-6100
gis@lrc.ky.gov

August 2013
This map has been compiled from various sources.
LRC does not guarantee its accuracy.
Printed with state funds.